



Compressor
Voltage Code : TZ

TFH4518Y

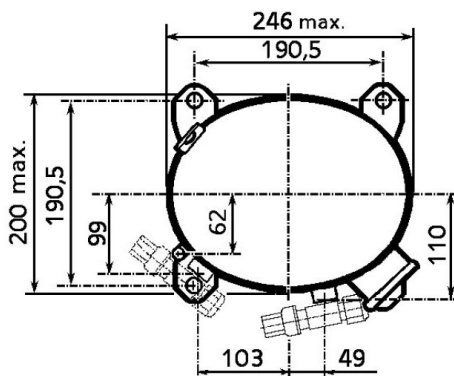
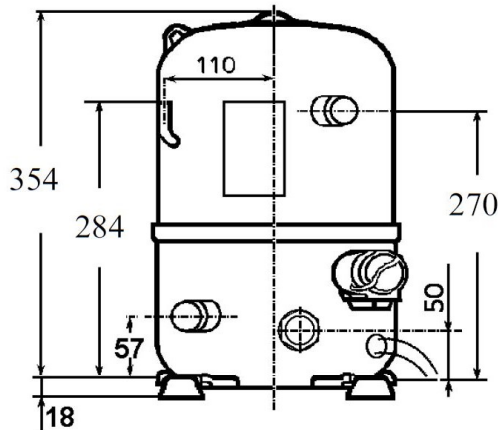
High Temp. Commercial (HP)

400V 3~ 50Hz / 440V 3~ 60 Hz

R134a

AHC4518YTZ

Conditions	Frequency	Nominal Cooling Capacity		Sound Power ISO3745 / ISO 3743-1
		Watts	BTU/h	
ARI 520-90 / R134a	50 Hz / 60 Hz	2115 / 2322	7211 / 7919	67 dBA



Displacement (cc)	53,2
Net Weight (Kg)	30.0
Oil Quantity (cc)	1330.0
Oil Type	Polyolester
Expansion Device	Capillary_Tube/Expansion_Valve
Cooling	Fan
Main Winding (Ohm)	6.3
Current	
RLA (A)	3.4 3.5
MCC (A)	4.2 4.6
LRA (A)	24 25
Electrical Equipment	TRI
Overload	Interne
Refrigerating connection for OD	
Suction Tube	15.9 (5/8")
Discharge Tube	12.7 (1/2")
Process Tube	6.35 (1/4")

* ARI 520-90 : T°Cond. 48.9°C / T°Evap. -6.7°C / T°Return gas temp.. 4.4°C
T°Subcooling. 0.0K

Certificates :



Note : Tecumseh reserves the right to change information contained in this document without notification.



Tecumseh

TFH4518Y	Tension TZ : 400V 3~ 50Hz / 440V 3~ 60 Hz
-----------------	--

Les performances sont données dans les **conditions ARI 520-90** :
 Condition Dew
 The performance data are in **ARI 520-90 conditions** :
 Dew Condition

Gaz aspirés : 4.4 °C
 Sous refroidissement : 0.0 K
 Return gas : 4.4 °C
 Subcooling : 0.0 K

© 2021 Tecumseh Products Company
All rights reserved

50 Hz R134a

N°216GU-T

4 T condensation	5 T évaporation	(°C)	-25	-20	-15	-10	-5	0
30	1 P frigorifique	(Watt)	887	1327	1862	2506	3275	4183
	2 P absorbée	(W)	729	852	974	1093	1204	1305
	3 I absorbée	(A)	2.64	2.72	2.80	2.89	2.99	3.09
40	1 P frigorifique	(Watt)	623	1030	1518	2102	2796	3616
	2 P absorbée	(W)	712	851	995	1143	1289	1430
	3 I absorbée	(A)	2.55	2.67	2.80	2.94	3.07	3.22
50	1 P frigorifique	(Watt)		724	1154	1665	2274	2993
	2 P absorbée	(W)		824	986	1156	1332	1508
	3 I absorbée	(A)		2.59	2.76	2.94	3.12	3.31
60	1 P frigorifique	(Watt)			799	1228	1739	2346
	2 P absorbée	(W)			951	1139	1338	1544
	3 I absorbée	(A)			2.69	2.91	3.13	3.36

60 Hz R134a

N°216GU-T

4 T condensation	5 T évaporation	(°C)	-25	-20	-15	-10	-5	0
30	1 P frigorifique	(Watt)	1085	1561	2153	2882	3770	4839
	2 P absorbée	(W)	849	1007	1171	1332	1483	1616
	3 I absorbée	(A)	2.25	2.37	2.50	2.65	2.81	2.99
40	1 P frigorifique	(Watt)	759	1180	1701	2342	3124	4068
	2 P absorbée	(W)	802	977	1167	1365	1565	1757
	3 I absorbée	(A)	2.15	2.31	2.49	2.68	2.89	3.12
50	1 P frigorifique	(Watt)		821	1271	1823	2499	3319
	2 P absorbée	(W)		915	1122	1347	1583	1823
	3 I absorbée	(A)		2.20	2.42	2.66	2.92	3.19
60	1 P frigorifique	(Watt)			875	1340	1910	2606
	2 P absorbée	(W)			1047	1288	1551	1828
	3 I absorbée	(A)			2.31	2.59	2.89	3.21

1 = cooling capacity 2 = power input 3 = current 4 = condensing temperature 5 = evaporating temperature

Nota : Tecumseh se réserve le droit de modifier les informations contenues dans ce document sans préavis.

Note : Tecumseh reserves the right to change information contained in this document without notification.