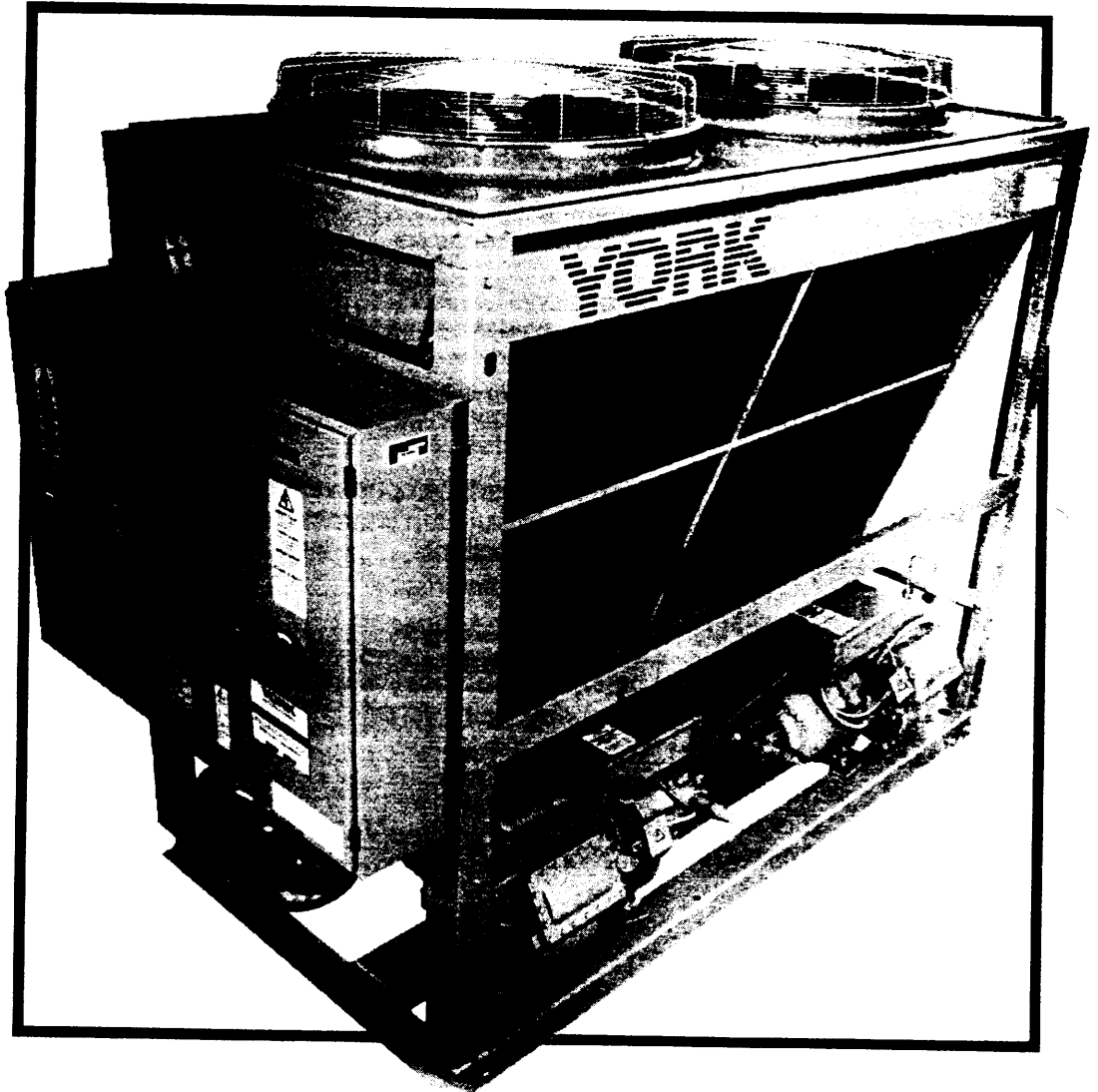




CERT No. FM970

Form No.	Y2016DG 795 GB
Supersedes	Y2016DG 693 GB
Date	7.95

YCAD - GSi STYLE B DESIGN



COOLING
CAPACITIES 167 - 272 kW

 **York**[®]

Cooling Capacities (Water)

Table 4.1

MODEL	Leaving Water °C	Condenser Entering Air °C											
		20		25		30		35		40		45	
		CAP	Power	CAP	Power	CAP	Power	CAP	Power	CAP	Power	CAP	Power
YCAD 50	+4.5	183	41.1	174	43.9	164	46.6	154	48.8	144	51.1	135	52.9
	+6	193	41.8	183	44.8	173	47.6	163	50.6	153	52.4	144	54.4
	+8	207	42.8	196	46.2	185	49.2	175	52.2	165	54.6	155	56.6
	+10	221	43.8	209	47.6	198	50.6	188	54.0	177	56.4	166	58.8
	+12	235	44.8	223	48.8	212	52.2	200	55.6	189	58.6	178	61.2
	+14	250	45.8	238	49.8	226	53.6	214	57.2	202	60.4	190	63.6
YCAD 55	+4.5	205	48.9	194	52.1	183	55.2	172	57.8	161	60.2	150	62.3
	+6	215	49.9	204	53.4	193	56.6	182	59.5	171	62.0	160	64.2
	+8	230	51.4	219	55.3	207	58.6	195	61.8	184	64.6	172	67.1
	+10	246	52.9	233	57.1	221	60.6	209	64.3	196	67.2	185	70.0
	+12	261	54.4	249	58.7	235	62.6	223	66.4	211	69.9	198	73.0
	+14	277	55.7	263	60.3	250	64.6	237	68.9	223	72.5	★	★
YCAD 60	+4.5	226	56.7	214	60.4	202	63.8	190	66.8	178	69.3	166	71.6
	+6	237	58.0	225	62.0	213	65.5	201	68.4	188	71.5	176	74.0
	+8	253	60.0	241	64.4	228	68.0	215	71.4	202	74.6	189	77.6
	+10	270	62.0	257	66.6	243	70.6	229	74.5	215	78.0	203	81.2
	+12	287	64.0	274	68.6	258	73.0	245	77.2	232	81.2	217	84.8
	+14	304	65.6	288	70.8	274	75.6	259	80.5	244	84.6	★	★
YCAD 65	+4.5	240	55.6	228	59.6	216	63.3	204	66.8	192	69.9	179	72.6
	+6	250	56.8	238	60.8	226	64.8	214	68.4	201	71.8	188	74.8
	+8	266	57.6	253	62.2	241	66.6	228	70.6	215	73.4	201	77.5
	+10	280	59.0	267	64.0	254	68.4	241	72.6	228	76.8	214	80.5
	+12	296	60.4	283	65.5	269	70.4	255	75.0	242	79.4	227	83.4
	+14	313	61.1	300	67.0	285	72.5	271	77.5	257	82.2	242	88.6
YCAD 75	+4.5	269	69.4	256	74.2	243	78.8	231	83.1	217	87.1	203	90.6
	+6	280	70.7	267	75.7	253	80.6	241	85.0	227	89.3	213	93.1
	+8	296	72.4	283	77.8	269	83.1	256	88.1	242	92.1	227	96.8
	+10	311	74.3	297	80.2	283	85.7	269	90.8	255	95.7	241	100.3
	+12	328	76.4	314	82.4	299	88.2	284	93.8	270	98.9	★	★
	+14	346	78.3	332	85.1	317	91.3	302	97.3	★	★	★	★
YCAD 85	+4.5	297	83.1	283	88.8	269	94.3	256	99.4	241	104.3	228	108.6
	+6	309	84.6	295	90.6	280	96.4	267	101.6	252	106.8	238	111.5
	+8	326	87.2	312	93.5	297	99.6	283	105.6	268	110.8	252	116.2
	+10	342	89.6	327	96.5	312	103.0	297	109.0	282	114.6	267	120.2
	+12	359	92.4	345	99.4	329	106.0	313	112.6	298	118.5	★	★
	+14	379	95.6	363	103.2	348	110.2	332	117.2	★	★	★	★

★ Automatic controls only allow part load operation at these conditions.

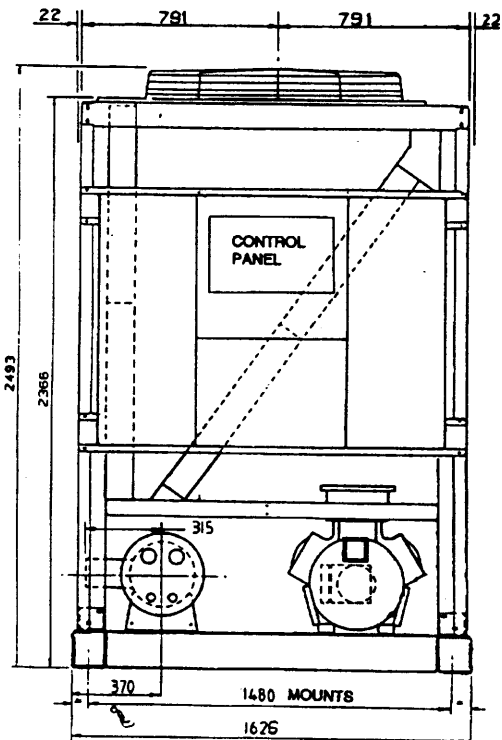
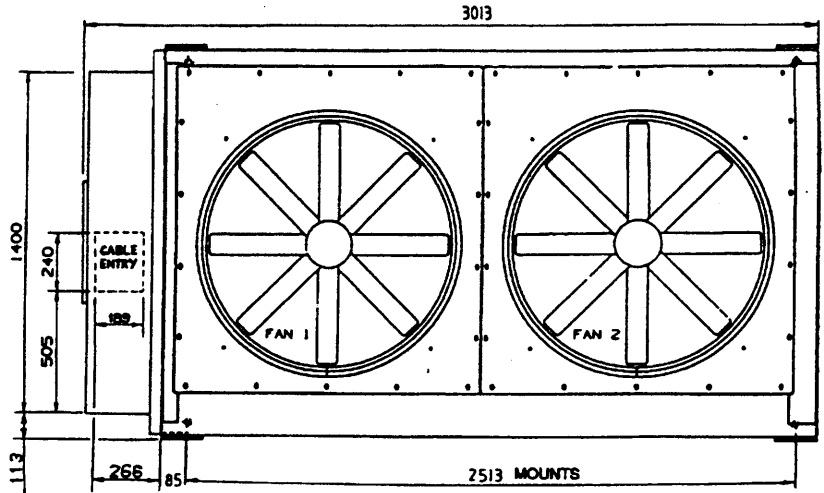
All figures in kW

5. PHYSICAL DATA

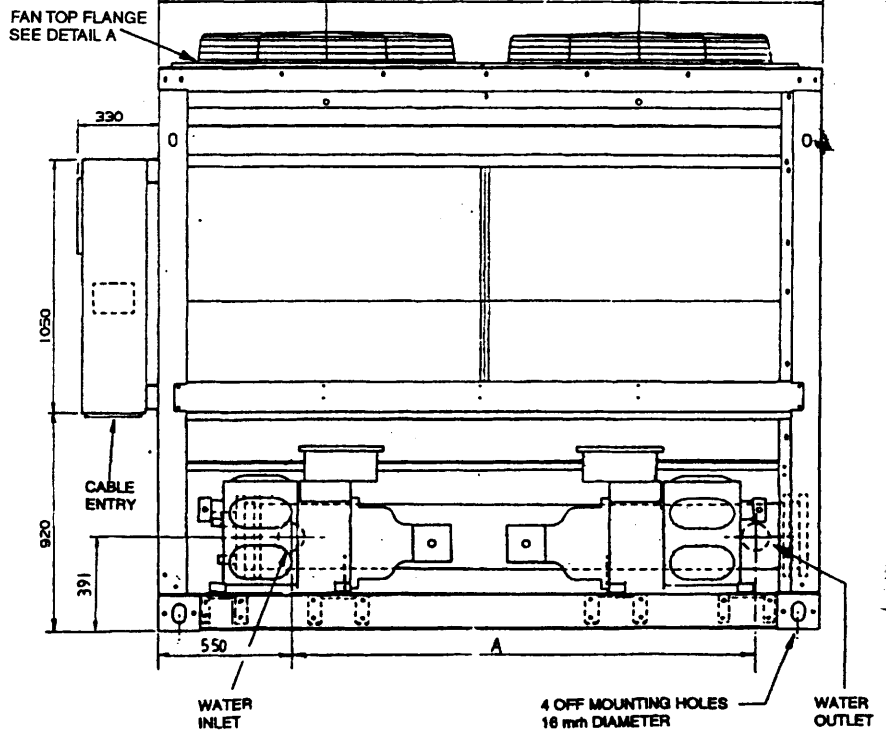
Dimensions

Fig. 5.1

MODEL	DIM A
YCAD 50	1574.5
YCAD 55	1574.5
YCAD 60	1574.5
YCAD 65	1879.5
YCAD 75	1879.5
YCAD 85	1879.5

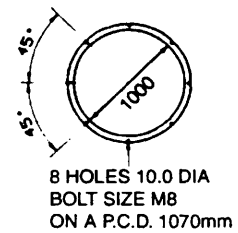
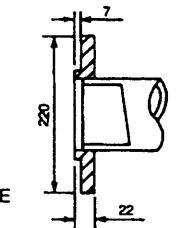
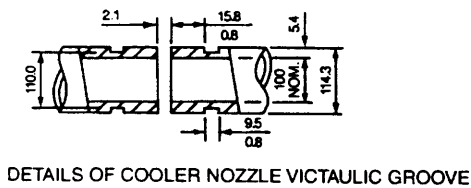


AVM WORKING HEIGHT = 130mm



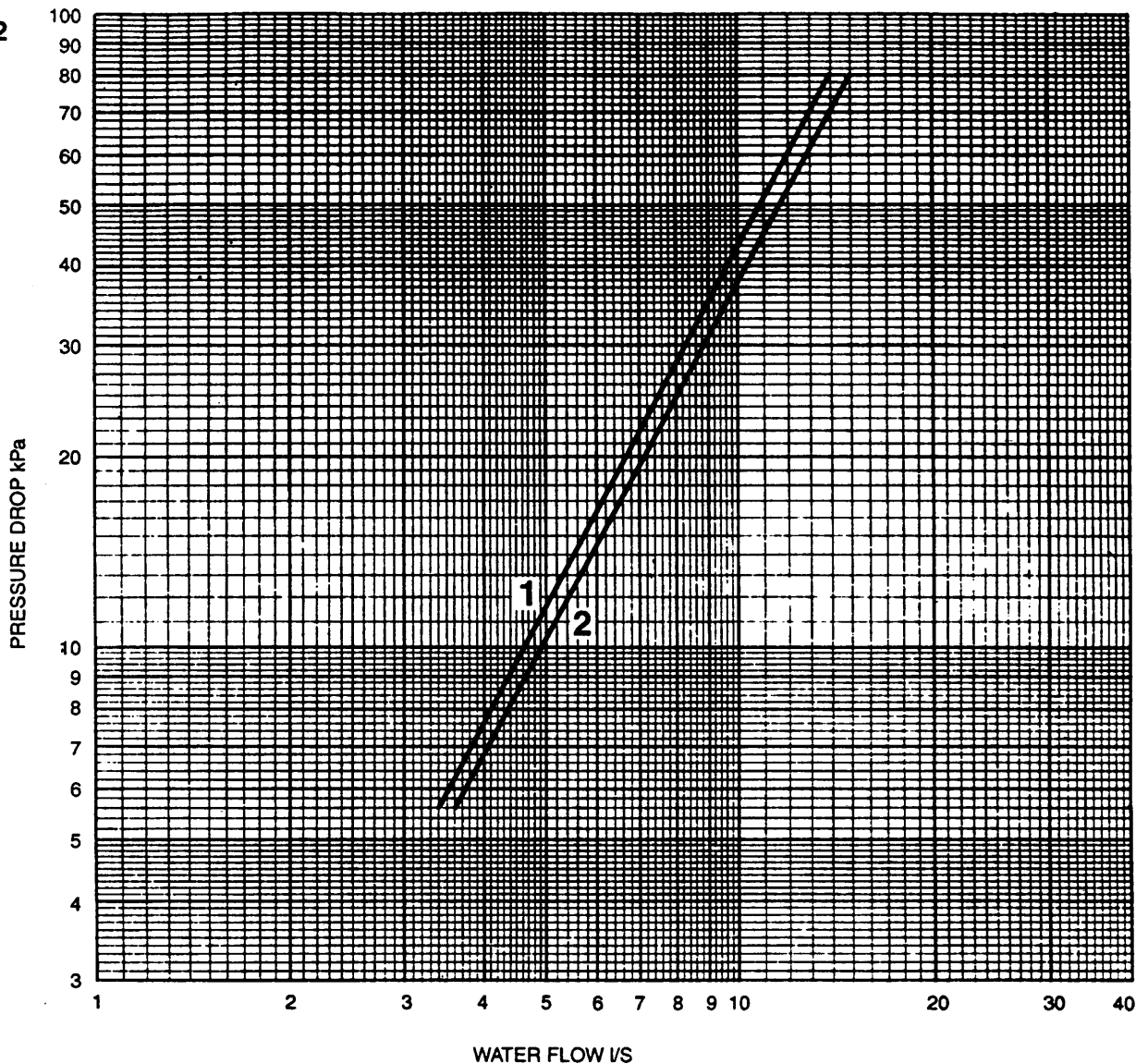
WATER INLET/OUTLET CONNECTION VICTAULIC COUPLING OR I.S.O. FLANGES ACCESSORY COOLER FLANGE KIT IS FACTORY INSTALLED AND AVAILABLE ON ALL MODELS. WELD FALANGES TO BS4504/ISO 7005-PN10

DETAIL A SHOWING TOP FAN FLANGE (ALL TYPES)



COOLER WATER PRESSURE DROP

Fig. 5.2



MODELS 50, 55, 60 : LINE 1

MODELS 65, 75, 85 : LINE 2

Fig. 5.2A
Pressure drop correction factor

Ethylene Glycol

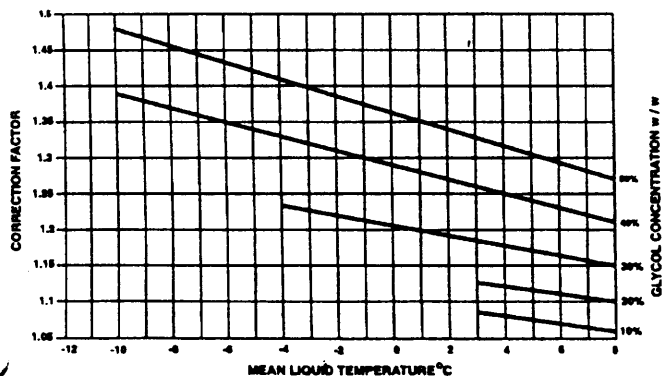
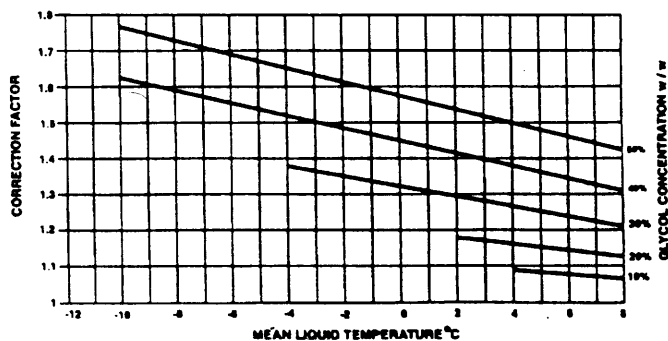


Fig. 5.2B
Pressure drop correction factor

Propylene Glycol



Unit Data

Table 5.1

MODEL		50	55	60	65	75	85	
Number of refrigerant circuits		2	2	2	2	2	2	
System One Compressor	Type	Z4M1-C	Z6S2-D	Z6S2-D	Z6S2-D	Z6AE2-E	Z6AE2-E	
	Cylinders	4	6	6	6	6	6	
	Speed (rpm)	1450	1450	1450	1450	1450	1450	
System Two Compressor	Type	Z4M1-C	Z4M1-C	Z6S2-D	Z6S2-D	Z6S2-D	Z6AE2-E	
	Cylinders	4	4	6	6	6	6	
	Speed (rpm)	1450	1450	1450	1450	1450	1450	
Unit Capacity Steps		5	6	7	7	7	7	
Twin Circuit Cooler	Type	DXA1006H			DXA1007H			
	Water Capacity	53 litre			61 litre			
	Max. Water Pressure	10 Barg			10 Barg			
	Max R22 Pressure	21 Barg			21 Barg			
Condensers	Face Area	4m ² + 4m ²			4m ² + 4m ²			
	Tube Rows	3			4			
Fans	Number		2			2		
	Std & High Head	Speed	950 rpm			950 rpm		
		Total Airflow	16.7 m ³ /s			20.5 m ³ /s		
	Slow Speed	Speed	700 rpm			700 rpm		
		Total Airflow	13.7 m ³ /s			16.1 m ³ /s		
Weights (kg)	Operating		1850	1945	2110	2220	2235	2250
	Shipping (with R22)		1800	1895	2060	2160	2175	2190
	Additional for Cu/Cu Coils		250	250	250	335	335	335