



Compressor Selection: Semi-hermetic Screw Compressors HS

Input Values

Compressor model	HSN7471-75	Operating mode	Standard
Refrigerant	R404A	Power supply	400V-3-50Hz
Reference temperature	Dew point temp.	Useful superheat	100%
Liq. subc. (in condenser)	0 K	Additional cooling	Automatic
Suct. gas superheat	10,00 K	Max. discharge gas temp.	80,0 °C

Result

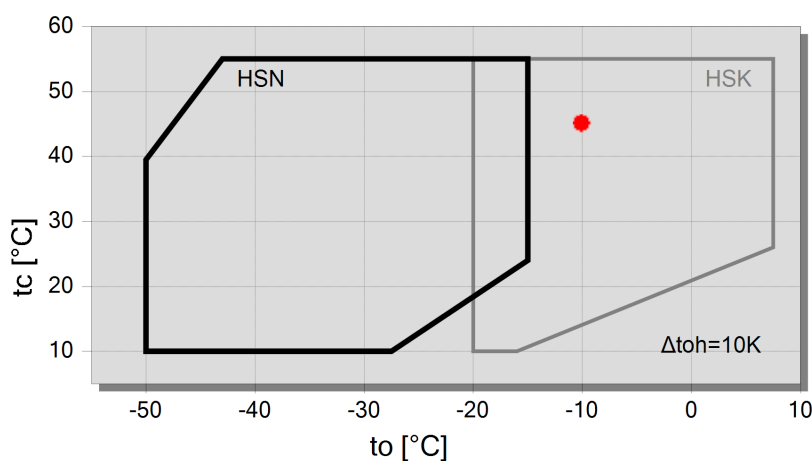
Q [W]	Cooling capacity	mHP [kg/h]	Mass flow HP
P [kW]	Power input	Qac [kW]	Additional cooling
I [A]	Current	tcu [°C]	Liquid temp.
COP [-]	COP/EER	pm [bar(a)]	ECO pressure
mLP [kg/h]	Mass flow LP	Qsc [kW]	sub cooler capacity (ECO)

tc	to	-10°C	-15°C	-20°C	-25°C	-30°C	-35°C	-40°C	-45°C
30°C	Q [W]	--	134659	108924	87160	68884	53656	41077	30788
	P [kW]	--	51,4	48,2	45,2	42,4	39,8	37,4	35,1
	I [A]	--	82,7	78,0	73,6	69,4	65,6	62,1	59,0
	COP [-]	--	2,62	2,26	1,93	1,62	1,35	1,10	0,88
	mLP [kg/h]	--	3934	3262	2678	2174	1741	1372	1059
	mHP [kg/h]	--	3934	3262	2678	2174	1741	1372	1059
	Qac [kW]	--	--	--	--	--	--	5,37	9,47
	tcu [°C]	--	29,6	29,6	29,6	29,6	29,6	29,6	29,6
	pm [bar(a)]	--	--	--	--	--	--	--	--
	Qsc [kW]	--	--	--	--	--	--	--	--
40°C	Q [W]	--	114721	92300	73423	57650	44581	33855	25145
	P [kW]	--	59,4	55,8	52,4	49,2	46,4	43,9	41,9
	I [A]	--	94,7	89,3	84,2	79,5	75,3	71,6	68,6
	COP [-]	--	1,93	1,65	1,40	1,17	0,96	0,77	0,60
	mLP [kg/h]	--	3857	3193	2616	2119	1693	1330	1023
	mHP [kg/h]	--	3857	3193	2616	2119	1693	1330	1023
	Qac [kW]	--	--	--	--	6,36	10,68	14,69	18,48
	tcu [°C]	--	39,6	39,6	39,6	39,6	39,6	39,6	39,6
	pm [bar(a)]	--	--	--	--	--	--	--	--
	Qsc [kW]	--	--	--	--	--	--	--	--
50°C	Q [W]	--	92430	73661	57942	44884	34136	25381	18331
	P [kW]	--	69,2	65,3	61,6	58,2	55,4	53,2	51,9
	I [A]	--	109,4	103,5	97,9	92,9	88,6	85,4	83,4
	COP [-]	--	1,33	1,13	0,94	0,77	0,62	0,48	0,35
	mLP [kg/h]	--	3710	3059	2494	2006	1587	1230	928
	mHP [kg/h]	--	3710	3059	2494	2006	1587	1230	928
	Qac [kW]	--	10,32	14,17	17,77	21,3	24,7	28,4	32,3
	tcu [°C]	--	49,7	49,7	49,7	49,7	49,7	49,7	49,7
	pm [bar(a)]	--	--	--	--	--	--	--	--
	Qsc [kW]	--	--	--	--	--	--	--	--

-- No calculation possible (see message in single point selection)

*According to EN12900 (10K suction gas superheat, 0K liquid subcooling)

Application Limits Standard

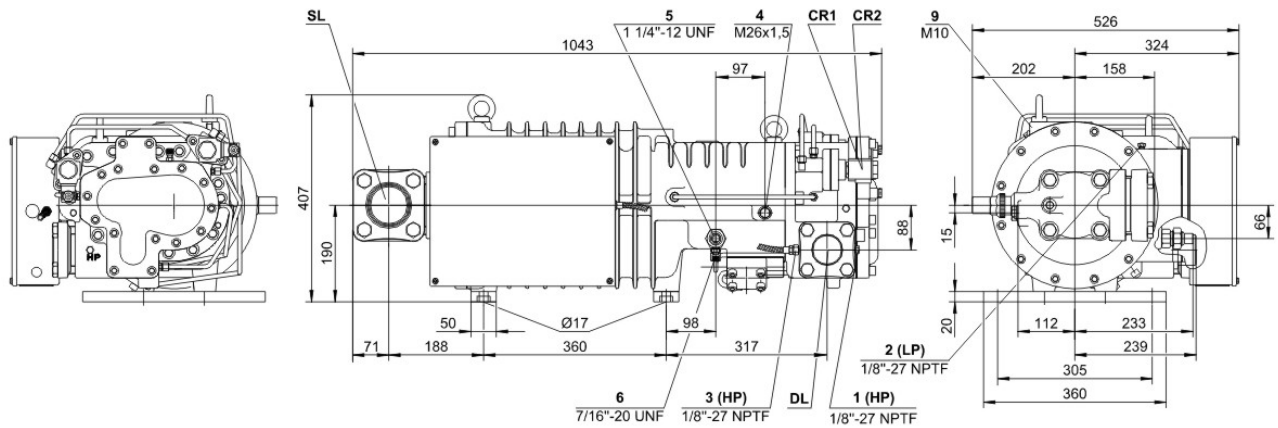


Legend
● A



Technical Data: HSN7471-75

Dimensions and Connections



Technical Data

Technical Data

Displacement (2900 RPM 50 Hz)	250 m ³ /h
Displacement (3500 RPM 60 Hz)	302 m ³ /h
Weight	326 kg
Max. pressure (LP/HP)	19 / 28 bar
Connection suction line	76 mm - 3 1/8"
Connection discharge line	54 mm - 2 1/8"
Adapter/shut-off valve for ECO	22 mm - 7/8" (Option)
Oil type R22	B150SH, B100 (Option)
Oil type	BSE170 (Option)
R134a/R404A/R507A/R407A/R407F/R448A/R449A	

Motor data

Motor voltage (more on request)	380-415V PW-3-50Hz
Max operating current	144.0 A
Starting current (Rotor locked)	350.0 A D / 585.0 A DD
Max. Power input	85,0 kW

Extent of delivery (Standard)

Discharge gas temperature sensor	Standard
Start unloading	Standard
Oil flow control	SE-B2 (Standard)
Motor protection	SE-E1 (Standard), SE-E3 (Standard for 660-690V)
Suction shut-off valve	Standard
Capacity control	100-75-50% (Standard)
Enclosure class	IP54

Available Options

Discharge shut-off valve	Option
ECO connection with shut-off valve	Option
Motor protection	SE-C1 (Option)

Sound measurement

Sound power level (-35°C / 40°C)	87,5 dB(A)
Sound pressure level @ 1m (-35°C / 40°C)	79,5 dB(A)