



Compressor Selection: Compact Screw Compressors CS

Input Values

Compressor model	(CSH7571-90Y)	Operating mode	Standard
Refrigerant	R134a	Power supply	400V-3-50Hz
Reference temperature	Dew point temp.	Capacity Control	100%
Liq. subc. (in condenser)	0 K	Additional cooling	Automatic
Suct. gas superheat	10,00 K	Max. discharge gas temp.	110,0 °C
Useful superheat	100%		

Result

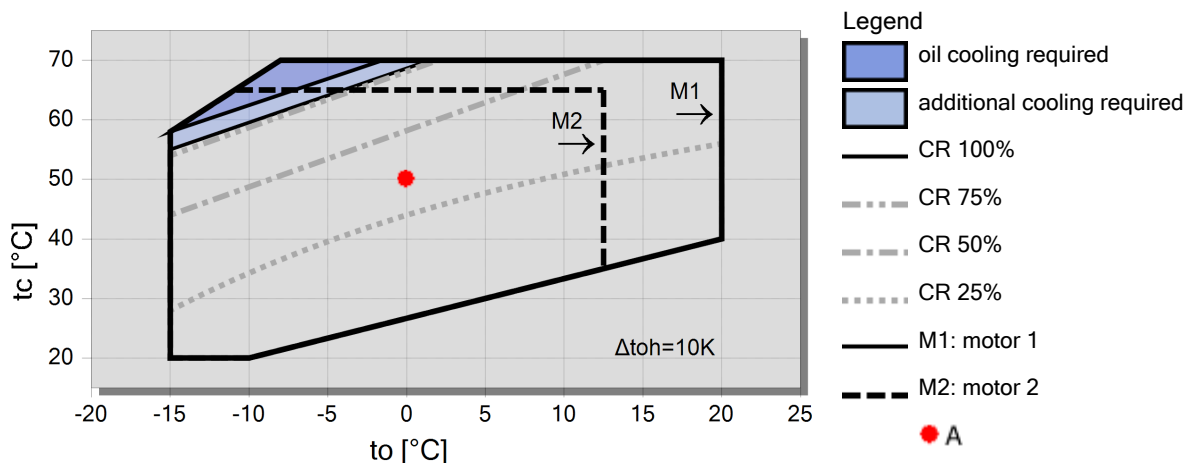
Q [W]	Cooling capacity	mHP [kg/h]	Mass flow HP
P [kW]	Power input	Qac [kW]	Additional cooling
I [A]	Current	tcu [°C]	Liquid temp.
COP [-]	COP/EER	pm [bar(a)]	ECO pressure
mLP [kg/h]	Mass flow LP	Qsc [kW]	sub cooler capacity (ECO)

tc	to	10°C	5°C	0°C	-5°C	-10°C	-15°C	-20°C	-25°C
30°C	Q [W]	--	185997	152596	124005	99664	79061	--	--
	P [kW]	--	31,9	30,4	29,2	28,3	27,8	--	--
	I [A]	--	59,6	57,8	56,4	55,3	54,6	--	--
	COP [-]	--	5,82	5,01	4,24	3,52	2,85	--	--
	mLP [kg/h]	--	3975	3324	2755	2259	1830	--	--
	mHP [kg/h]	--	3975	3324	2755	2259	1830	--	--
	Qac [kW]	--	--	--	--	--	--	--	--
	tcu [°C]	--	30,0	30,0	30,0	30,0	30,0	--	--
	pm [bar(a)]	--	--	--	--	--	--	--	--
	Qsc [kW]	--	--	--	--	--	--	--	--
40°C	Q [W]	201751	166103	135445	109204	86853	67916	--	--
	P [kW]	39,4	37,6	36,0	34,7	33,6	32,8	--	--
	I [A]	69,3	66,8	64,8	63,1	61,7	60,7	--	--
	COP [-]	5,12	4,42	3,76	3,15	2,59	2,07	--	--
	mLP [kg/h]	4635	3893	3242	2671	2172	1738	--	--
	mHP [kg/h]	4635	3893	3242	2671	2172	1738	--	--
	Qac [kW]	--	--	--	--	--	--	--	--
	tcu [°C]	40,0	40,0	40,0	40,0	40,0	40,0	--	--
	pm [bar(a)]	--	--	--	--	--	--	--	--
	Qsc [kW]	--	--	--	--	--	--	--	--
50°C	Q [W]	176302	144169	116544	92897	72742	55637	--	--
	P [kW]	46,0	44,4	43,0	41,7	40,7	39,9	--	--
	I [A]	78,4	76,1	74,1	72,4	71,0	69,9	--	--
	COP [-]	3,83	3,25	2,71	2,23	1,79	1,40	--	--
	mLP [kg/h]	4489	3754	3106	2536	2036	1598	--	--
	mHP [kg/h]	4489	3754	3106	2536	2036	1598	--	--
	Qac [kW]	--	--	--	--	--	--	--	--
	tcu [°C]	50,0	50,0	50,0	50,0	50,0	50,0	--	--
	pm [bar(a)]	--	--	--	--	--	--	--	--
	Qsc [kW]	--	--	--	--	--	--	--	--

-- No calculation possible (see message in single point selection)

*According to EN12900 (10K suction gas superheat, 0K liquid subcooling, see T.Data/ Notes)

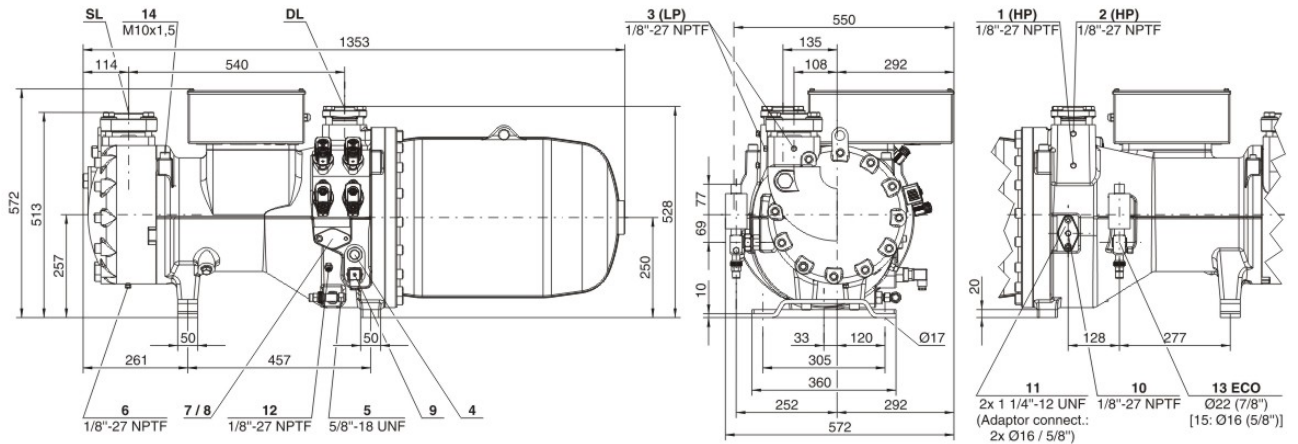
Application Limits Standard





Technical Data: (CSH7571-90Y)

Dimensions and Connections



Technical Data

Technical Data

Displacement (2900 RPM 50 Hz)	258 m3/h
Displacement (3500 RPM 60 Hz)	311 m3/h
Weight	530kg
Max. pressure (LP/HP)	19 / 28 bar
Connection suction line	76 mm - 3 1/8"
Connection discharge line	54 mm - 2 1/8"
Oil type R22	B320SH (Standard)
Oil type R134a/R407C/R404A/R507A/R407A/R407F	BSE170 (Option)

Motor data

Motor voltage (more on request)	380-415V PW-3-50Hz
Max operating current	162.0 A
Winding ratio	50/50
Starting current (Rotor locked)	423.0 A D / 686.0 A DD
Max. Power input	96,0 kW

Extent of delivery (Standard)

Enclosure class	IP54
Oil heater	200 W (Standard)
Oil separator	Standard
Oil filter	Standard
Discharge gas temperature sensor	Standard
Start unloading	Standard
Capacity Control - 4-step	100-75-50-25% (Standard)
Capacity Control - infinite	100-25% (Standard)
Built-in check valve	Standard
Motor protection	SE-E1 (Standard), INT69VSY-II(Standard for 660-690V)
Oil charge	15,0 dm3

Available Options

Oil level switch	Option
Discharge shut-off valve	Option
Suction shut-off valve	Option
Shut-off valve for ECO with muffler	Option
Liquid injection with integrated nozzle	Option
Bridges for DOL start	Option
Vibration dampers	Option