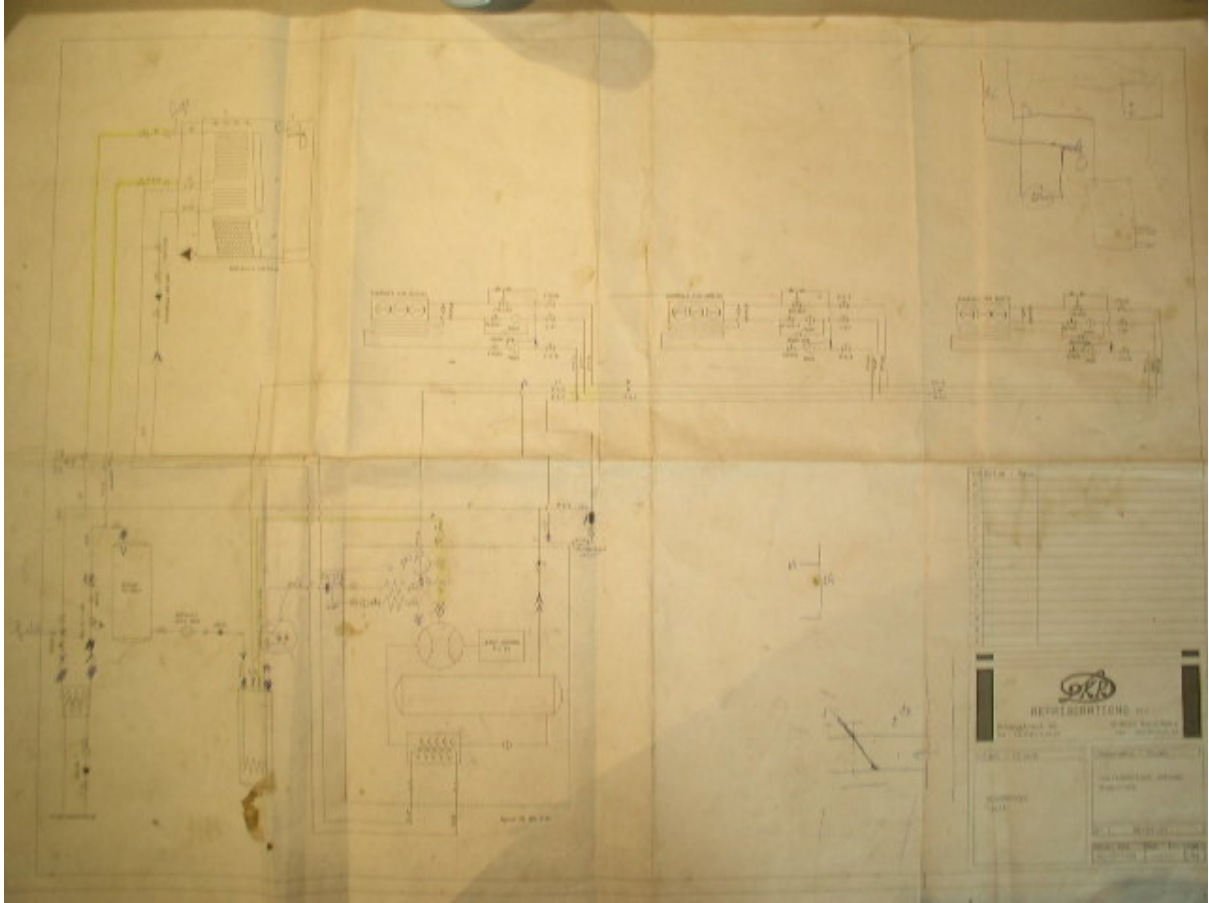
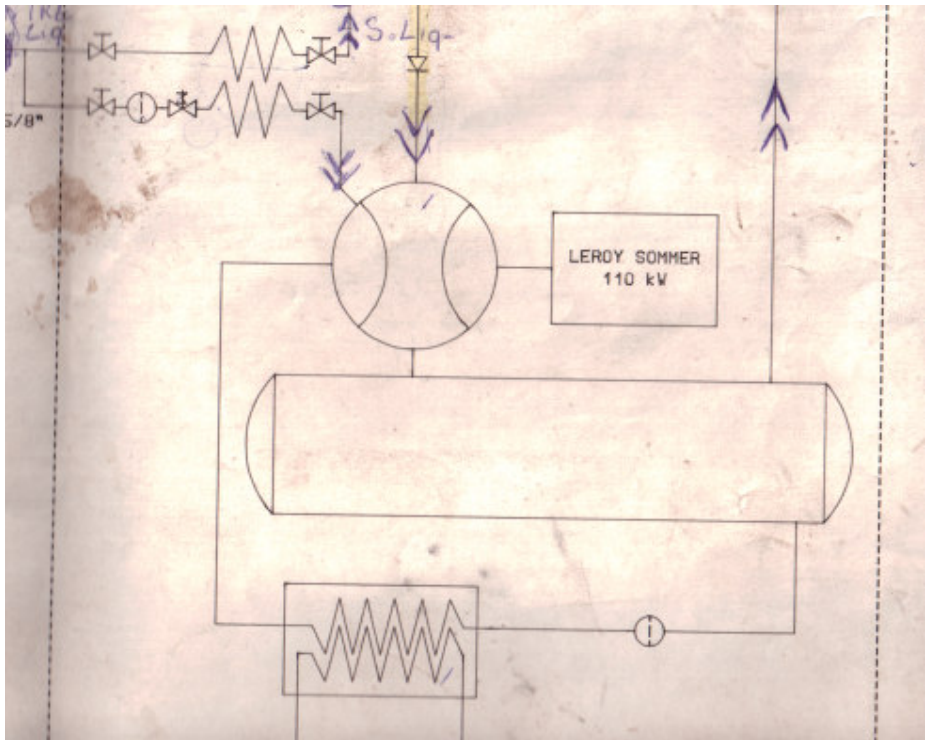


MYCOM FM 160S-ME FREEZING INSTALLATION



1. Compressor

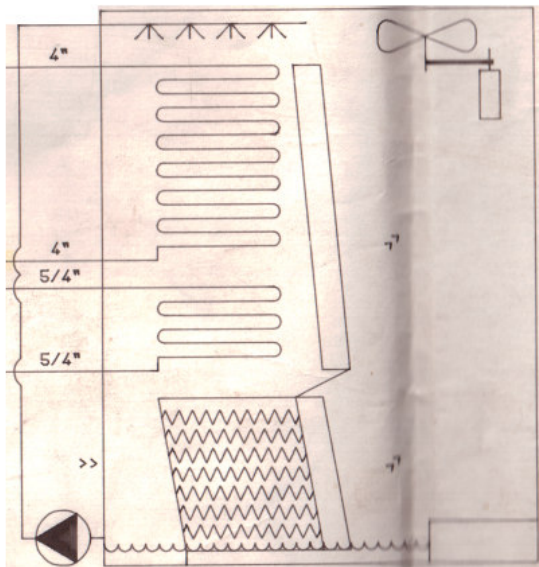
- Brand: Mycom
Type: FM 160S-ME
Pieces: 1
Capacity: 151 kW at $-30^{\circ}\text{C}/+30^{\circ}\text{C}$
Volume: 417 m³/hr
Pe: 82,9 kW
COP: 1.82
Cap. Control: 10 – 100 %
Including:
- Filter on the suction pipe (75 micron)
 - Non-return Valve on the suction pipe
 - Oil separator horizontal (5-8 ppm) with accessories and safety valves (TUV)
 - Non-return Valve on the pressure gas pipeline
 - Oil filter OFC (max. 50 micron)
 - Watercooled Oil cooler
 - Clutch with protection plate
 - MYCOM SCOPA (SM 830) Economizer with all regulations and protections
 - Fully installed Oil circuit with valves and safeties



2. Evaporating Condensor

Brand: Baltimore
Type: CXV 93
Pieces: 1
Capacity: 264 kW
Wet bol temp.: 21°C
Evaporating temp.: +30°C
Air flow: 55.000 m³/hr
1x fan (2 speeds): 10,5(22A)/2,2 kW(6,4A) – 380V – 1450/750 RPM
Water flow: 43.2 m³/hr
1x pump: 1,1 kW(3A) – 380V – 1450 RPM
Including:
- exhaust heating for thermostatic control
- baltibond full protection on the device
- complete water treatment fitted excluding products

Sizes: 1860x2385x4145 mm (LxWxH)
Weight empty: 2530 kg.
Weight in progress: 3810 kg.

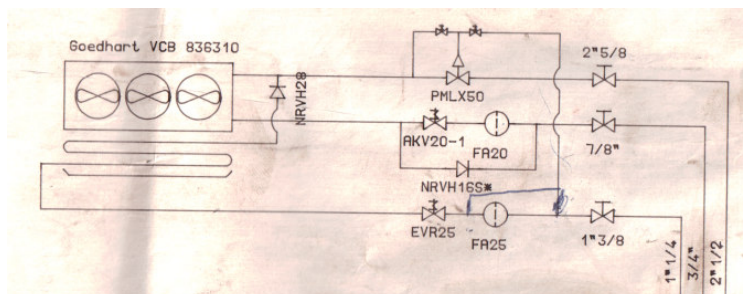


3. Liquid receiver

Brand: Profoid
Type: R230H
Pieces: 1
Contents: 250 ltr.
Sizes: 1400x500 mm (LxØ)
Including: - Valves for condensing- and liquidpipe
- Alarm for low level freon
- Non-return valve on return condenser

4. Evaporators

Brand: Goedhart
Type: VCB 836310
Pieces: 3
Capacity: 49,86 kW
Evap. Temp.: -30 °C
Air in/out: -20,5 °C/-23,5 °C
Defrosting: Hot Gas
Air flow: 39.900 m³/hr
3x fan: 0,91 kW – 380V – 1450 RPM / Ø 630 mm
Lamelblock: CU/AL
Cool surface: 282 m²
Tube Ø: 5/8"
Tube distance: 50 mm
Fan space : 10 mm
Sizes : 4110x1160x1100 mm (LxWxH)
Weight: 720 kg.
Including: - Fan hood and ring heating
- Outlet diffuser with heated defrost valve
- casing in galvanized steel



5. Control panel

- Including:
- 1 head switch
 - 1 main fuse
 - 1 signal light 'voltage'

 - 1 automatic safety for electromotor compressor
 - 1 automatic star-delta switch for electromotor compressor
 - 1 thermal motor protection for electromotor compressor
 - 1 signal light for electromotor compressor
 - 1 switch for electromotor compressor

 - 3 automatic safety for evaporating condenser
 - 1 automatic dahlanders switch for evaporating condenser
 - 3 thermal motor protection for evaporating condenser
 - 1 automatic solenoid valve for evaporating condenser
 - 4 signal lights for evaporating condenser
 - 1 switch for evaporating condenser

 - 3 automatic safety for fans of Goedhart evaporators
 - 9 automatic solenoid valves for fans of Goedhart evaporators
 - 9 thermal motor protection for fans of Goedhart evaporators
 - 9 signal lights for fans of Goedhart evaporators
 - 3 switches for fans of Goedhart evaporators

 - Automatic fuses for PLC control
 - Hermetic glands and terminals for connection and passage of electric cables



6. Control equipment

- Including:
- 3 electronic plus valves for improved efficiency
 - 1 Liquid line filter dryer
 - 1 Sight glass
 - 2 Non-return valves on the pressure gas pipeline
 - 1 automatic three-way AMOT-Valve for oil regulation
 - 1 space thermometer with digital output
 - 3 evaporator thermostat for end thaw
 - 3 line drive, each with;
 - 2 Solenoid valve
 - Filters
 - Non-return valves
 - Valves
 - Refrigerant: R507

7. PLC

Complete rules and guidance by PLC Klockner MOeller PS4 (or equivalent) programmed in-house. Temperature registration via PLC printer.



8. Heat-Recovery for floor heating

Brand: SWEP
Type: B10x40
Pieces: 1
Capacity: 16 kW
Glycol 30/70 in: 7°C
Glycol 30/70 out: 12°C
Flow: 3.000 l./u.
Material plates: RVS
Nr. of plates: 40
Surface: 1.22 m²
Connection R507: 1 1/8"
Connection Glycol: 1"
Including: - All regulation equipment to link the whole system

