



Compressor  
Voltage Code : KZ

**TAG4553T**

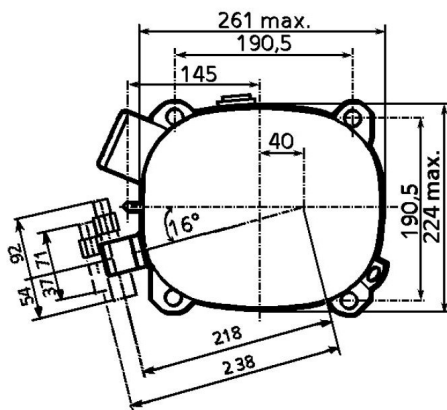
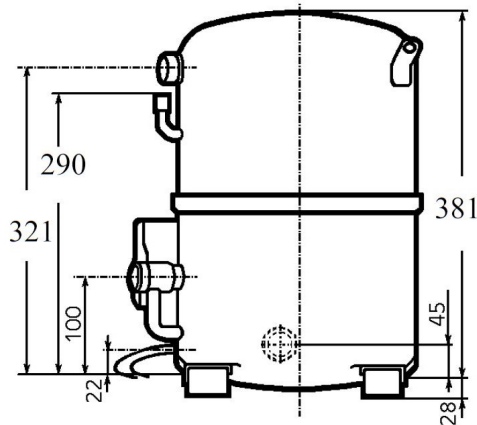
High Temp. Commercial (HP)

220V 3~ 50Hz / 220V 3~ 60 Hz

R22

AGB4553TKZ

Conditions	Frequency	Nominal Cooling Capacity		Sound Power ISO3745 / ISO 3743-1
		Watts	BTU/h	
ARI 520-90 / R22	50 Hz / 60 Hz	6794 / 8067	23167 / 27507	77 dBA



<b>Displacement (cc)</b>	100,7
<b>Net Weight (Kg)</b>	46.0
<b>Oil Quantity (cc)</b>	1760.0
<b>Oil Type</b>	Mineral
<b>Expansion Device</b>	Capillary_Tube/Expansion_Valve
<b>Cooling</b>	Fan
<b>Main Winding (Ohm)</b>	0.7
<b>Current</b>	
RLA (A)	15.2   16
MCC (A)	29   26
LRA (A)	111   106
<b>Electrical Equipment</b>	TRI
<b>Overload</b>	Interne
<b>Refrigerating connection for OD</b>	
Suction Tube	22.2 (7/8")
Discharge Tube	15.9 (5/8")
Process Tube	6.35 (1/4")

\* ARI 520-90 : T°Cond. 48.9°C / T°Evap. -6.7°C / T°Return gas temp.. 4.4°C  
T°Subcooling. 0.0K

Certificates :



Note : Tecumseh reserves the right to change information contained in this document without notification.



**Tecumseh**

<b>TAG4553T</b>	<b>Tension KZ : 220V 3~ 50Hz / 220V 3~ 60 Hz</b>
-----------------	--

Les performances sont données dans les <b>conditions ARI 520-90</b> :	Gaz aspirés :	4.4 °C
Condition Dew	Sous refroidissement :	0.0 K
The performance data are in <b>ARI 520-90 conditions</b> :	Return gas :	4.4 °C
Dew Condition	Subcooling :	0.0 K

<b>50 Hz R22</b>							
<b>N°237EU-K</b>							
4   T condensation	5   T évaporation	(°C)	<b>-20</b>	<b>-15</b>	<b>-10</b>	<b>-5</b>	<b>0</b>
<b>40</b>	1   P frigorifique	(Watt)	3827	5239	6901	8830	11046
	2   P absorbée	(W)	2223	2548	2846	3126	3398
	3   I absorbée	(A)	11.8	12.2	12.6	13.0	13.4
<b>50</b>	1   P frigorifique	(Watt)	2855	4084	5533	7220	9162
	2   P absorbée	(W)	2081	2492	2880	3253	3622
	3   I absorbée	(A)	11.3	12.0	12.7	13.4	14.1
<b>60</b>	1   P frigorifique	(Watt)		3033	4268	5712	7379
	2   P absorbée	(W)		2468	2963	3446	3928
	3   I absorbée	(A)		11.8	12.8	13.8	14.9

<b>60 Hz R22</b>							
<b>N°237EU-K</b>							
4   T condensation	5   T évaporation	(°C)	<b>-20</b>	<b>-15</b>	<b>-10</b>	<b>-5</b>	<b>0</b>
<b>40</b>	1   P frigorifique	(Watt)	4539	6230	8220	10531	13181
	2   P absorbée	(W)	2783	3210	3607	3981	4337
	3   I absorbée	(A)	8.97	10.1	11.2	12.3	13.4
<b>50</b>	1   P frigorifique	(Watt)	3373	4829	6557	8575	10900
	2   P absorbée	(W)	2639	3163	3665	4152	4631
	3   I absorbée	(A)	8.61	9.94	11.3	12.7	14.2
<b>60</b>	1   P frigorifique	(Watt)		3582	5047	6772	8772
	2   P absorbée	(W)		3133	3744	4348	4952
	3   I absorbée	(A)		9.80	11.4	13.1	14.9

1 = cooling capacity 2 = power input 3 = current 4 = condensing temperature 5 = evaporating temperature

**Nota : Tecumseh se réserve le droit de modifier les informations contenues dans ce document sans préavis.**  
**Note : Tecumseh reserves the right to change information contained in this document without notification.**

© 2021 Tecumseh Products Company  
All rights reserved