



### Selection: Semi-hermetic Reciprocating Compressors

#### Input Values

Compressor model Mode	(66F-80.2Y) Refrigeration and Air conditioning	Suction gas temperature Operating mode	20,00 °C Auto
Refrigerant	R404A	Power supply	400V-3-50Hz
Reference temperature	Dew point temp.	Capacity control	100%
Liq. subc. (in condenser)	0 K	Useful superheat	100%

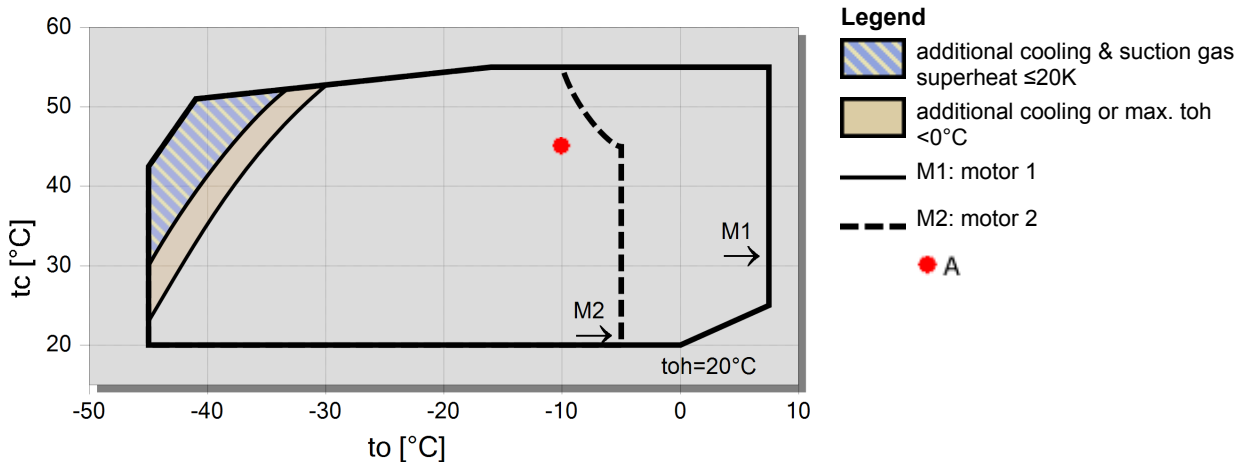
#### Result

Q [W]	Cooling capacity	COP [ - ]	COP/EER
Qu* [W]	Evaporator capacity	m [kg/h]	Mass flow
P [kW]	Power input	Op.	Operating mode
I [A]	Current	th [°C]	Discharge gas temp. w/o cooling
Qc [W]	Condenser capacity		

tc	to	5°C	-5°C	-15°C	-25°C	-35°C	-45°C	-55°C	-65°C
30°C	Q [W]	--	237462	160257	102823	60937	31195	--	--
	Qu* [W]	--	237462	160257	102823	60937	31195	--	--
	P [kW]	--	62,9	55,4	45,7	34,7	23,3	--	--
	I [A]	--	113,9	103,8	91,2	78,0	66,6	--	--
	Qc [W]	--	300381	215629	148494	95617	54459	--	--
	COP [ - ]	--	3,77	2,89	2,25	1,76	1,34	--	--
	m [kg/h]	--	5965	3953	2504	1470	748	--	--
	Op.	--	Standard	Standard	Standard	Standard	Standard	--	--
	th [°C]	--	70,4	84,2	100,0	118,9	0	--	--
	40°C	Q [W]	--	201799	135268	85566	49214	23354	--
Qu* [W]		--	201799	135268	85566	49214	23354	--	--
P [kW]		--	72,0	61,2	48,7	35,5	22,3	--	--
I [A]		--	126,3	111,5	95,1	78,9	65,8	--	--
Qc [W]		--	273794	196446	134273	84667	45633	--	--
COP [ - ]		--	2,80	2,21	1,76	1,39	1,05	--	--
m [kg/h]		--	5713	3751	2339	1331	627	--	--
Op.		--	Standard	Standard	Standard	Standard	Standard	--	--
th [°C]		--	81,5	95,6	111,8	131,6	0	--	--
50°C		Q [W]	--	--	110590	68648	37968	--	--
	Qu* [W]	--	--	110590	68648	37968	--	--	--
	P [kW]	--	--	66,1	51,0	35,5	--	--	--
	I [A]	--	--	118,3	98,0	79,0	--	--	--
	Qc [W]	--	--	176737	119624	73492	--	--	--
	COP [ - ]	--	--	1,67	1,35	1,07	--	--	--
	m [kg/h]	--	--	3542	2162	1182	--	--	--
	Op.	--	--	Standard	Standard	Standard	--	--	--
	th [°C]	--	--	107,3	124,2	0	--	--	--

-- No calculation possible (see message in single point selection)  
 \*According to EN12900 (20°C suction gas temp., 0K liquid subcooling)

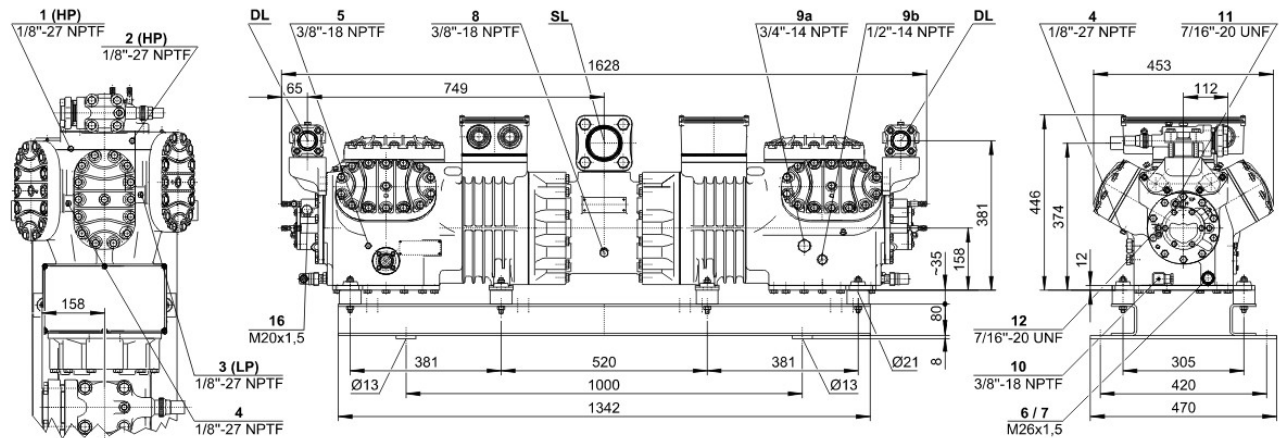
### Application Limits 100% 66F-80.2





## Technical Data: (66F-80.2Y)

### Dimensions and Connections



### Technical Data

#### Technical Data

Displacement (1450 RPM 50Hz)	303,2 m³/h
Displacement (1750 RPM 60Hz)	365,9 m³/h
No. of cylinder x bore x stroke	6+6 x 82 mm x 55 mm
Weight	519 kg
Max. pressure (LP/HP)	19 / 28 bar
Connection suction line	76 mm - 3 1/8"
Connection discharge line	2x42 mm - 1 5/8"
Connection cooling water	R 3/4"
Oil type R134a/R407C/R404A/R507A/R407A/R407F	tc<55°C: BSE32   tc>55°C: BSE55 (Option)
Oil type R22 (R12/R502)	B5.2 (Standard)

#### Motor data

Motor voltage (more on request)	380-420V PW-3-50Hz
Max operating current	2x78.0 A
Winding ratio	50/50
Starting current (Rotor locked)	2x180.0 A Y / 2x323.0 A YY
Max. Power input	2 x 38,6 kW

#### Extent of delivery (Standard)

Motor protection	SE-B2
Enclosure class	IP54 (Standard), IP66 (Option)
Vibration dampers	Standard
Oil charge	9,50 dm³

#### Available Options

Connection suction line	Option
Discharge shut-off valve	Option
Discharge gas temperature sensor	Option
Start unloading	Option
Capacity control	100-83-66-33-17% (Option)
Additional fan	Option
Water-cooled cylinder heads	Option
CIC System	Option
Oil service valve	Option
Crankcase heater	2 x 140 W (Option)
Oil pressure monitoring	MP54 (Option), Delta-PII (Option)

#### Sound measurement

Sound power level (-10°C / 45°C)	86,0 dB(A) @ 50Hz
Sound power level (-35°C / 40°C)	94,5 dB(A) @ 50Hz
Sound pressure level @ 1m (-10°C / 45°C)	78,0 dB(A) @ 50Hz
Sound pressure level @ 1m (-35°C / 40°C)	86,5 dB(A) @ 50Hz