



Tecumseh

Compressor
Voltage Code : TZ

TAG4568T

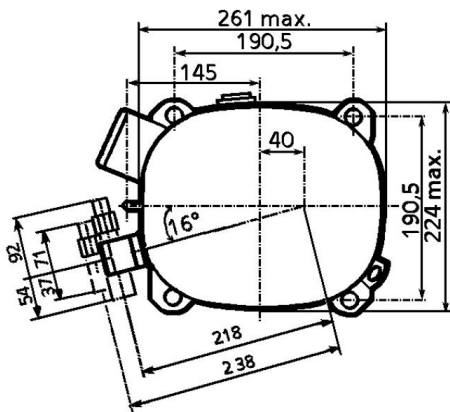
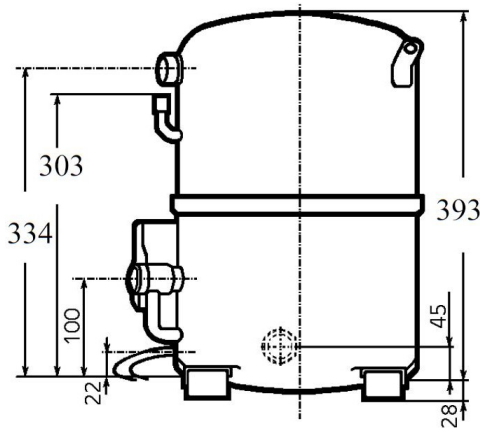
High Temp. Commercial (HP)

400V 3~ 50Hz / 440V 3~ 60 Hz

R22

AGB4568TTZ

Conditions	Frequency	Nominal Cooling Capacity		Sound Power ISO3745 / ISO 3743-1
		Watts	BTU/h	
ARI 520-90 / R22	50 Hz / 60 Hz	8830 / 10473	30111 / 35714	75 dBA



Displacement (cc)	124,4
Net Weight (Kg)	48.0
Oil Quantity (cc)	1760.0
Oil Type	Mineral
Expansion Device	Capillary_Tube/Expansion_Valve
Cooling	Fan
Main Winding (Ohm)	2.6
Current	
RLA (A)	9.6 11
MCC (A)	15.6 16.5
LRA (A)	54 59
Electrical Equipment	TRI
Overload	Interne
Refrigerating connection for OD	
Suction Tube	28.6 (1"1/8)
Discharge Tube	15.9 (5/8")
Process Tube	6.35 (1/4")

* ARI 520-90 : T°Cond. 48.9°C / T°Evap. -6.7°C / T°Return gas temp.. 4.4°C
T°Subcooling. 0.0K

Certificates :



Note : Tecumseh reserves the right to change information contained in this document without notification.



Tecumseh

TAG4568T	Tension TZ : 400V 3~ 50Hz / 440V 3~ 60 Hz
-----------------	--

Les performances sont données dans les **conditions ARI 520-90** :
 Condition Dew
 The performance data are in **ARI 520-90 conditions** :
 Dew Condition

Gaz aspirés : 4.4 °C
 Sous refroidissement : 0.0 K
 Return gas : 4.4 °C
 Subcooling : 0.0 K

© 2021 Tecumseh Products Company
All rights reserved

50 Hz R22

N°237JU-T

4 T condensation	5 T évaporation	(°C)	-20	-15	-10	-5	0
40	1 P frigorifique	(Watt)	5187	6795	8861	11372	14312
	2 P absorbée	(W)	2693	3153	3600	4034	4455
	3 I absorbée	(A)	5.15	5.95	6.70	7.40	8.06
50	1 P frigorifique	(Watt)	4017	5413	7211	9395	11951
	2 P absorbée	(W)	2581	3141	3695	4245	4790
	3 I absorbée	(A)	4.95	5.86	6.76	7.63	8.49
60	1 P frigorifique	(Watt)		3978	5536	7422	9620
	2 P absorbée	(W)		3143	3804	4469	5137
	3 I absorbée	(A)		5.78	6.82	7.87	8.93

60 Hz R22

N°237JU-T

4 T condensation	5 T évaporation	(°C)	-20	-15	-10	-5	0
40	1 P frigorifique	(Watt)	6212	8113	10538	13471	16895
	2 P absorbée	(W)	4093	4586	5070	5545	6010
	3 I absorbée	(A)	6.36	7.15	7.90	8.61	9.27
50	1 P frigorifique	(Watt)	4811	6464	8576	11129	14107
	2 P absorbée	(W)	3922	4565	5204	5839	6469
	3 I absorbée	(A)	6.11	7.04	7.97	8.88	9.77
60	1 P frigorifique	(Watt)		4753	6585	8792	11356
	2 P absorbée	(W)		4571	5363	6156	6949
	3 I absorbée	(A)		6.95	8.04	9.15	10.3

1 = cooling capacity 2 = power input 3 = current 4 = condensing temperature 5 = evaporating temperature

Nota : Tecumseh se réserve le droit de modifier les informations contenues dans ce document sans préavis.

Note : Tecumseh reserves the right to change information contained in this document without notification.