



Baltimore Aircoil

Date : 23.8.1989
B.A.C. No.: 89-1693 H
Model No : VXC-980 R

Right hand unit

Certified Capacity: 3790 KW (~~xxxxxx~~) 33 °C Cond.temp. _____ °C Suct.temp.
at 18 °C entering wet bulb. NH3 Refrigerant.

Fan Motor(s): 16/3 x 4 KW 1500/750 RPM 3 Phase 50 Hertz 380 Volts
Dahlander Drives based on zero E.S.P.

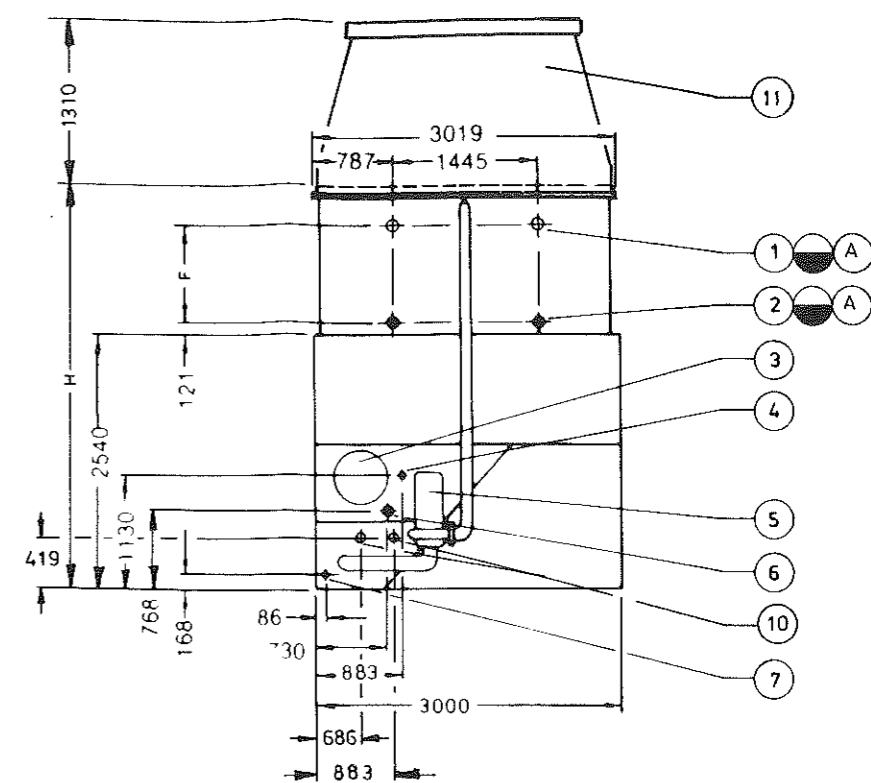
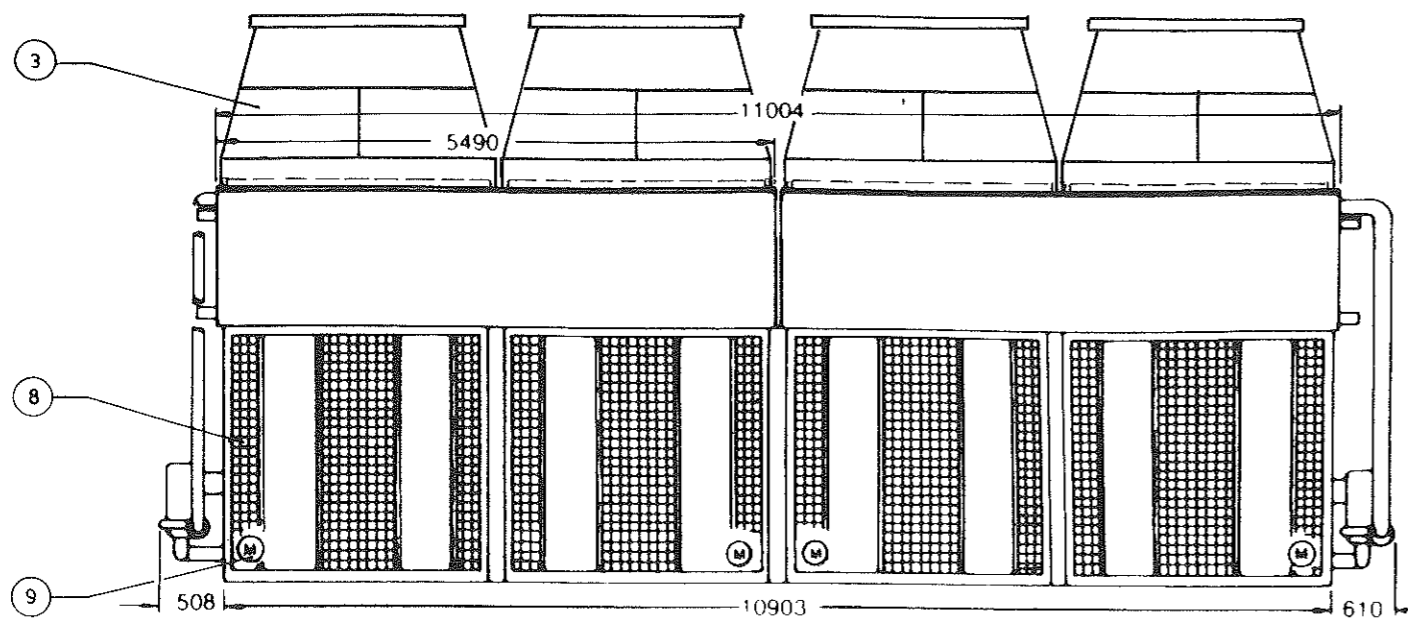
Pump(s) 2 x 4 KW 3000 RPM 3 Phase 50 Hertz 220/380 Volts

Submittal Data: 3 copies. For Record For Approval

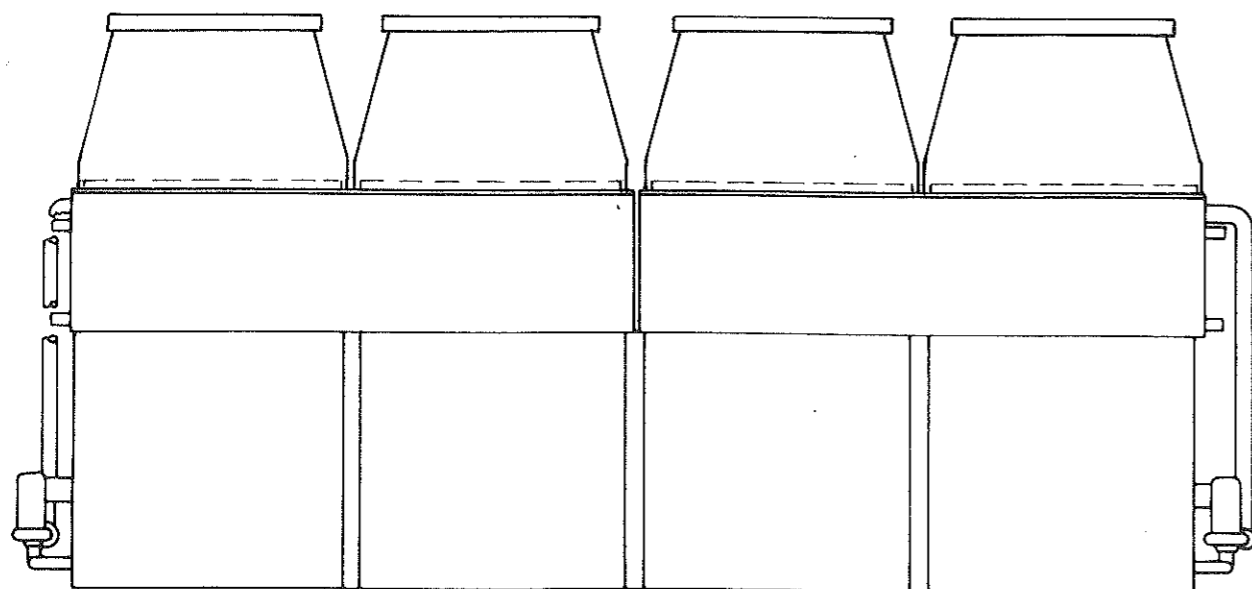
	DWG NO.		DWG NO.
x Unit certified print	1MR 8036	x Discharge hood + BBCPS	1MR 8036
x Steel support	M 8036 S	Sound Attenuation	
x Weight loading	MR8036WT	Discharge Inlet	
Remote sump connection		Solid bottom pnls+insul.	
less float valve & strainer,		Extended lube lines	
less pump		Solid bottom panels	
Fan discharge dampers		Less fan screens	
Elec. damper controls		Bottom screens	
Elec. water level controls		Ladder	
Package Switch only		Safety cage	
x Elec. pan heaters (4) 5 kW, 5367 B		Safety railings	
<u>220/380</u> V., <u>3</u> Ph., <u>50</u> Hz.,		Equalzing connections	
x Low level cut out switch		Split coil	
x Fan motor wiring diagram	7802/20A		

REMARKS:

- x Baltibond(R) Corrosion protection system.
- x Discharge hood with positive closure dampers and actuators.
- x Stoomwezen
- x Bevelled for welding.



BEVELED FOR WELDING



NOTES 1 DIMENSIONS SHOWING LOCATION OF COIL CONNECTIONS ARE APPROXIMATE AND SHOULD NOT BE USED FOR PREFABRICATION OF CONNECTING PIPING
 2 ALL CONNECTIONS THROUGH 150 ARE B S P MALE THREAD CONNECTIONS LARGER THAN 150 ARE BEVELED FOR WELDING

BEMERKUNGEN 1. ALLE ANGABEN ZUR LAGE DER ROHRSCHLANGENANSCHLUSSE SIND ABGERUNDET UND SOLLTEN NICHT ZUR EINPLANUNG BZW. Z VORFERTIGUNG DER VERROHRUNG HERANGEZOGEN WERDEN
 2. ALLE ANSCHLUSSE BIS 150 HABEN AUSSERGEWINDE ANSCHLUSSE UBER 150 SIND SCHWEISSTUTZEN

REMARQUES 1. L'EMPLACEMENT DES RACCORDEMENTS DE LA BATTERIE D'ECHANGE ET LES DIMENSIONS ENTRE-AXES N'ONT QUE VALEUR D'INDICATION ET NE PEUVENT SERVIR POUR LA PREFABRICATION DES TUYAUTERIES
 2. TOUS LES RACCORDS JUSQU'A 150 SONT FILETES EXTERIEUREMENT AU PAS DU GAZ (DIN 2999) RACCORDS PLUS GRANDS QUE 150 SONT BISEAUTES POUR SOUDAGE.

15				
14				
13				
12				
4	11	HOOD WITH POSITIVE CLOSURE DAMPERS		
4	10	ELECTRIC HEATER	WANNENHEIZUNG	THERMOPLONGEUR
4	9	FAN MOTOR LOCATION	ANORDNUNG DER VENTILATORMOTORE	EMPLACEMENT DU MOTEUR DE VENTILAT.
12	8	PROTECTION FOR MOVING PARTS	DER SCHUTZ DER BEWEGENDEN TEILE	PROTECTION DES ORGANES MOBILES
2	7	DRAIN ND 50	ENTLEERUNG NW 50	VIDANGE DN 50
2	6	OVERFLOW ND 80	UBERLAUF NW 80	TROP-PLEIN DN 80
2	5	WATER PUMP	WASSERUMWALZPUMPE	POMPE
1	4	MAKEUP ND 80	ZUSATZWASSER NW 80	EAU D'APPOINT DN 80
10	3	ACCESS DOOR	TUR	PORTE D'ACCES
4	2	OUTLET ND 100	AUSTRITT NW 100	SORTIE DN 100
4	1	INLET ND 100	EINTRITT NW 100	ENTREE DN 100

QTY AN	ITEM NO	DESCRIPTION	BESCHREIBUNG	DESCRIPTION	
4	11	19610	24110	959 4010	
4	10	21420	26210	959 4010	
2	8	20050	24840	959 4010	
2	6	22180	27090	1226 4277	
MODEL NR		APPROXIMATE SHIPPING WEIGHT (kg)	APPROXIMATE OPERATING WEIGHT (kg)	F (mm)	H (mm)
MODELE NO		POIDS D'EXPEDITION	POIDS EN OPERATION		



BALTIMORE AIRCOIL INTERNATIONAL

HEIST-OP-DEN-BERG, BELGIUM

DATE	NO	REVISIONS	Model
26-10-89	A	BEVELED FOR WELDING	VXC-980 R
	B		
	C		
	D		
	E		
	F		
Date	25-09-79	Order no	BAC no
Dwg by	V.A.G.	89-1693 H	MR 8036A
Chk'd by		Dwg no.	1MR 8036