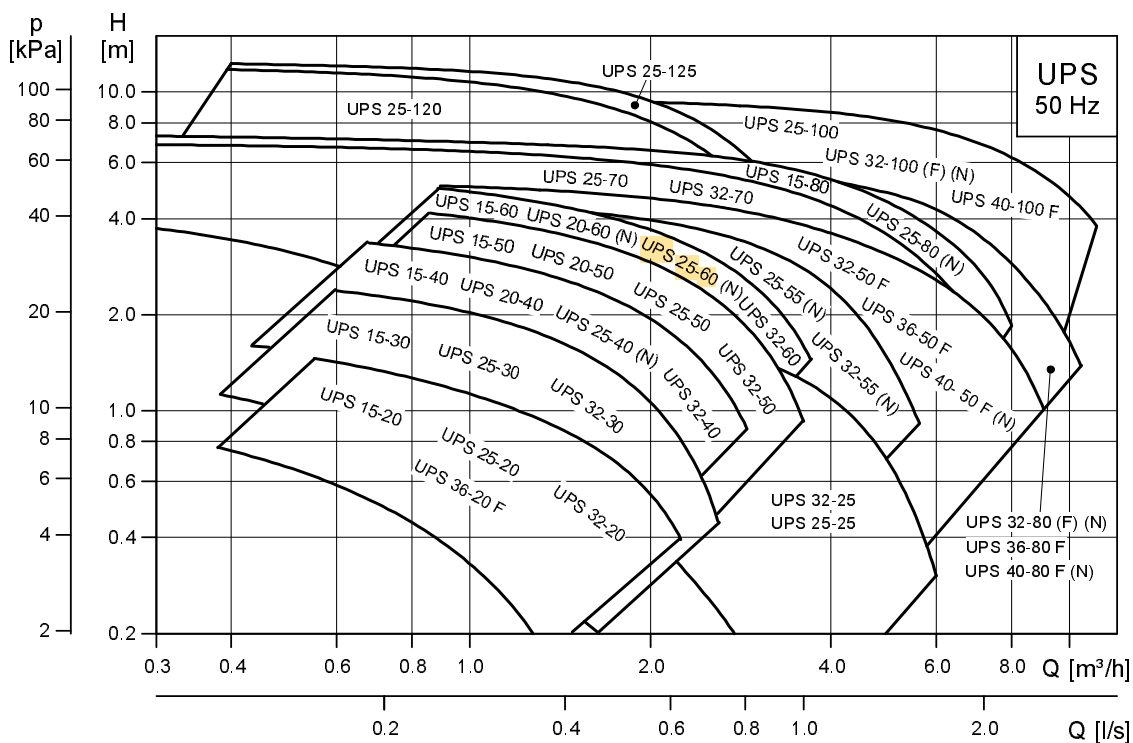


Series 100

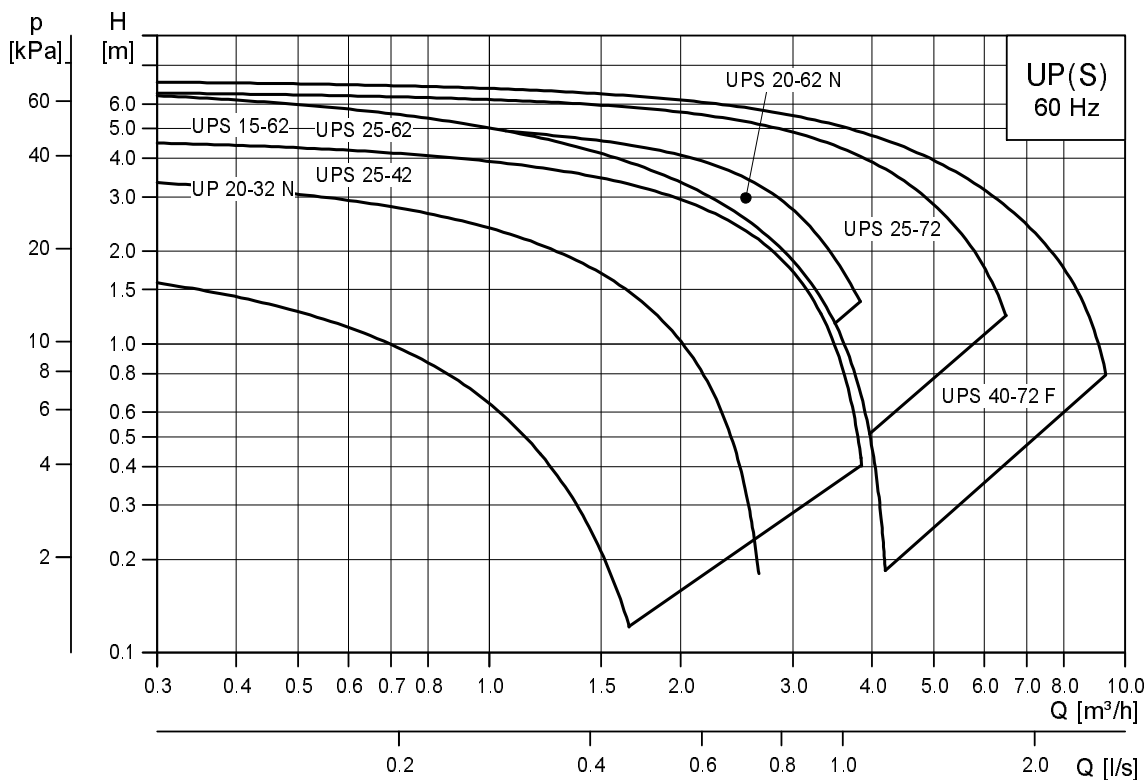
Series 100 circulator pumps
50/60 Hz



1. Performance range



TM00 9602 1709



TM04 4621 1809

3. Type keys

UP, UPA, UPS, UPSD

Example	UP	A	S	D	40	-50	F
Type range							
A = automatic control							
S = electric speed control							
Twin-head pump							
Nominal diameter (DN) of suction and discharge ports [mm]							
Maximum head [dm]							
Pipe connection: = pipe thread (no letter) F = flange							
Pump housing: = cast iron (no letter) N = stainless steel A = pump housing with air separator, upward water flow K = cold-water version KU = cold-water version (foam-filled terminal box and stator)							

GRUNDFOS COMFORT (PM)

Example	UP	20	-14	B	X	U	T	A
Type range								
Nominal diameter (DN) of suction and discharge ports [mm]								
Maximum head [dm]								
Brass pump housing								
Integrated isolating and non-return valves								
24-hour timer								
Thermostat								
AUTO _{ADAPT}								

PM = Permanent-Magnet motor

UPS SOLAR

Example	UPS SOLAR	15	-65	130
Type range				
Nominal diameter (DN) of suction and discharge ports [mm]				
Maximum head [dm]				
Port-to-port length [mm]				

Material specification

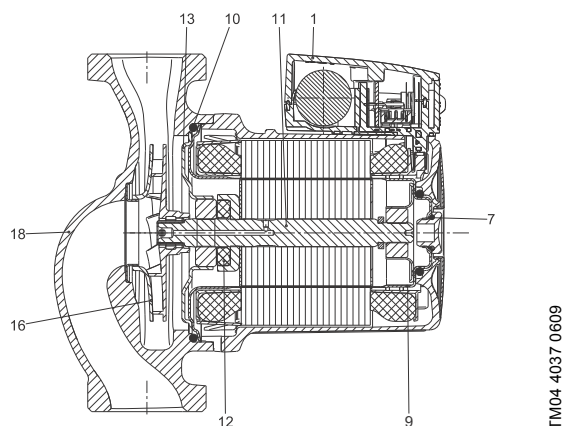


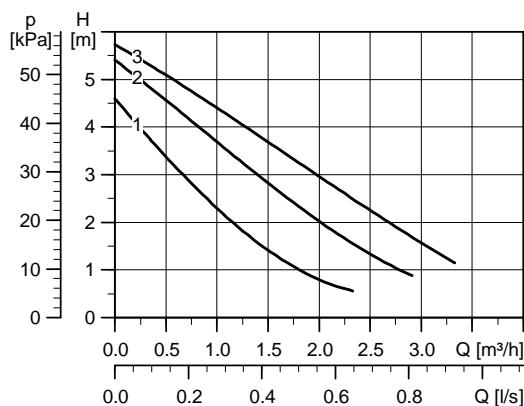
Fig. 6 UP, UPA, UPS and SOLAR

Pos.	Component	Material	EN	AISI/ASTM
1	Terminal box	Composite PPE/PS		
7, 10	Gaskets	EPDM rubber		
9	Rotor can	Stainless steel	1.4301 1.4521	304 444
	Radial bearing	Ceramic		
11	Shaft complete	Stainless steel for UPS xx-100	1.4404	316L
	Thrust bearing	Carbon		
12	Thrust bearing retainer	EPDM rubber		
13	Bearing plate	Stainless steel	1.4301	304
16	Impeller	Composite PES/PP 30 % GF		
18	Pump housing ¹⁾	Cast iron	EN-JL1020 EN-JL1030	A48-25B A48-30B
		Stainless steel	1.4301	304
			1.4308	CF8

¹⁾ SOLAR, electro-coated cast iron

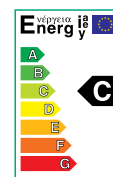
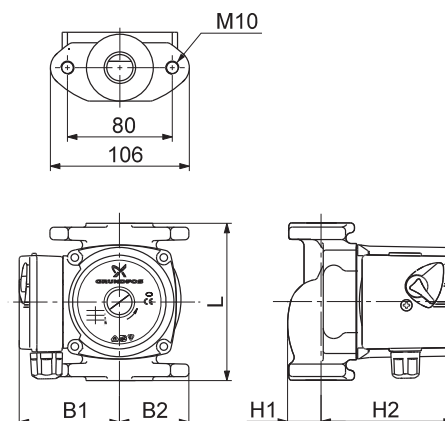
UPS 21-60 F (K)

1 x 230 V, 50 Hz



TM00 9751 4708

Speed	P ₁ [W]	I _{1/1} [A]
3	70	0.30
2	60	0.27
1	50	0.22



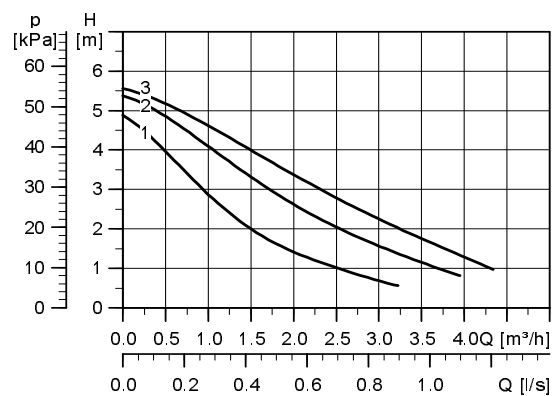
TM00 8929 2105 - TM03 0870 0705

Connections: See *Pipe connections* on page 50.
 System pressure: Max. 10 bar
 Liquid temperature: +2 °C to +110 °C (TF 110)
 Also available with:

Pump type	Dimensions [mm]						Weights [kg]		Ship. vol. [m³]
	L	H1	H2	B1	B2	G	Net	Gross	
UPS 21-60 F	120	32	102	75	53		2.9	3.1	0.004

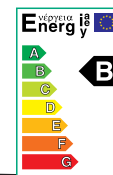
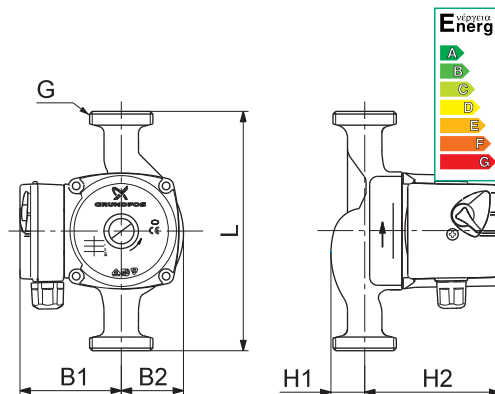
UPS 25-60 (K) (N) (A)

1 x 230 V, 50 Hz



TM04 5012 2409

Speed	P ₁ [W]	I _{1/1} [A]
3	60	0.28
2	55	0.25
1	50	0.21



TM00 8945 2105 - TM03 0869 4608

Connections: See *Pipe connections* on page 50.
 System pressure: Max. 10 bar
 Liquid temperature: +2 °C to +110 °C (TF 110)
 Also available with: Stainless-steel pump housing, type N, and air separator, type A

Pump type	Dimensions [mm]						Weights [kg]		Ship. vol. [m³]
	L	H1	H2	B1	B2	G	Net	Gross	
UPS 25-60 (K) (N) (A)	180	38	96	75	50	1 1/2	2.6	2.8	0.004

V7124413 1011
Repl. V7124413 1110

GB

ECM: 1082029

The name Grundfos, the Grundfos logo, and the payoff Be-Think-Innovate are registered trademarks owned by Grundfos Management A/S or Grundfos A/S, Denmark. All rights reserved worldwide.